

# LIVESTOCK PRODUCTS

AUSTRALIA

EMBARGO: 11:30AM (CANBERRA TIME) FRI 12 MAY 2000

## MARCH QTR KEY FIGURES

### TREND ESTIMATES

	Mar Qtr 1999 '000	Dec Qtr 1999 '000	Mar Qtr 2000 '000
<b>Number slaughtered</b>			
Cattle	1 978.4	1 878.3	1 875.8
Calves	276.7	277.8	280.4
Sheep	3 597.0	3 567.5	3 496.3
Lambs	4 010.5	4 220.9	4 276.2
Pigs	1 291.2	1 246.5	1 258.5
Chickens	93 735.4	97 090.4	98 728.8

	Mar Qtr 1999 tonnes	Dec Qtr 1999 tonnes	Mar Qtr 2000 tonnes
<b>Meat produced</b>			
Beef	495 688	485 934	486 555
Veal	8 951	8 997	8 993
Mutton	75 481	75 553	73 814
Lamb	77 914	82 927	84 354
Pig meat	92 340	90 442	92 089
Chicken meat	140 698	147 009	151 388
Wool receivals	165 300	156 635	154 087

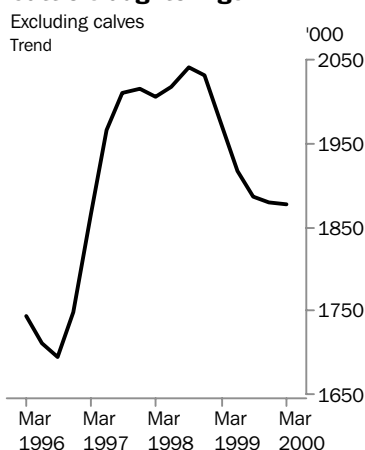
	Dec Qtr 1998 ML	Sep Qtr 1999 ML	Dec Qtr 1999 ML
Whole milk intake by factories	2 515	2 711	2 688

## MARCH QTR KEY POINTS

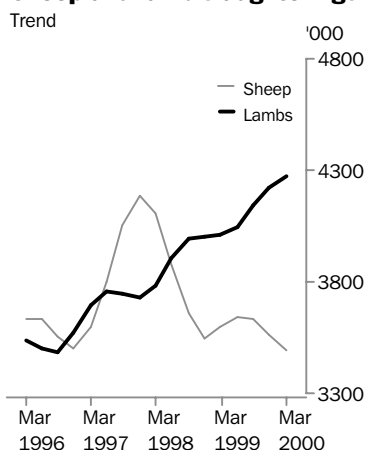
### TREND ESTIMATES

- The trend estimate for the number of chickens slaughtered rose 2% to a record level of 98.7 million in March quarter 2000.
- The trend estimate for the number of lambs slaughtered in March quarter 2000 was 4.3 million, 1% higher than the December quarter 1999 estimate. This was the highest quarterly figure since March quarter 1988.
- The trend estimate for the number of cattle slaughtered in March quarter 2000 was 1.9 million, slightly lower than the December quarter 1999. This was the sixth consecutive quarterly decrease.

### Cattle slaughterings



### Sheep and lamb slaughterings



■ For further information about these and related statistics, contact Graeme Lakin on Hobart 03 6222 593, or the National Information Service on 1300 135 070.

# NOTES

## FORTHCOMING ISSUES

*ISSUE (Quarter)*

*RELEASE DATE*

June 2000

10 August 2000

September 2000

10 November 2000



## CHANGES IN THIS ISSUE

The stocks of frozen meat data, previously supplied by the Department of Agriculture, Fisheries and Forestry, has been withdrawn from this publication, as the collection has been discontinued.

## FORTHCOMING CHANGES

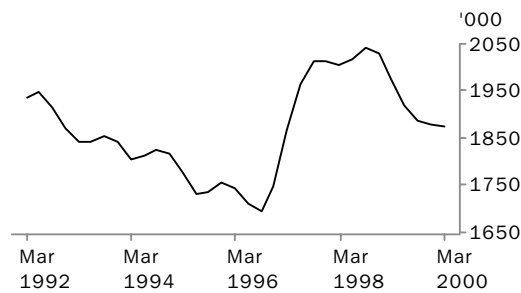
There are no forthcoming changes.



W. McLennan  
Australian Statistician

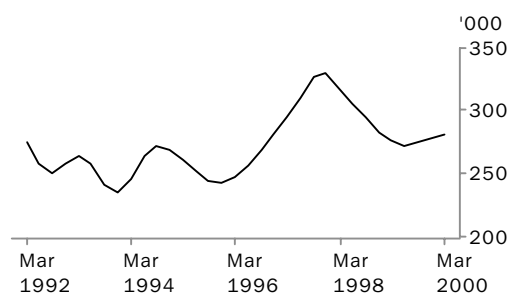
# LIVESTOCK SLAUGHTERED: Trend

## CATTLE (EXCLUDING CALVES)



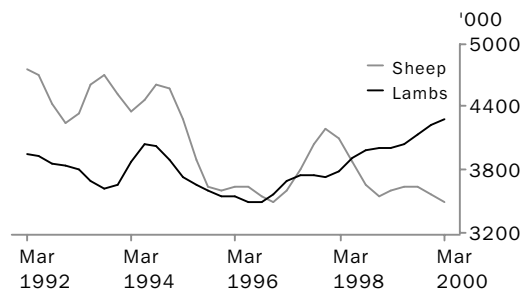
The trend estimate for cattle slaughtering remained steady in March quarter 2000 at 1.9 million. Flooding in Queensland and northern NSW contributed to limiting the supply of cattle to abattoirs.

## CALVES



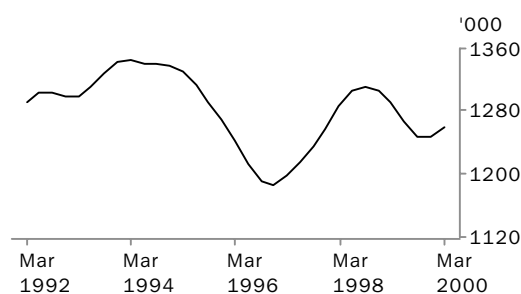
The trend estimate for calf slaughtering rose slightly to 280,000 in March quarter 2000.

## SHEEP AND LAMBS



The trend estimate for sheep slaughtering fell by 2% in March quarter 2000 to 3.5 million. The trend estimate for lamb slaughtering rose slightly to 4.3 million in March quarter 2000, the highest quarterly lamb slaughtering since March quarter 1988.

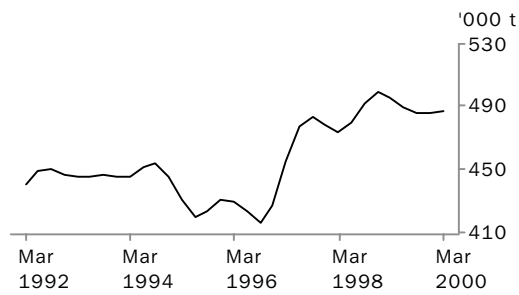
## PIGS



The trend estimate for pig slaughtering rose slightly in March quarter 2000 to 1.3 million, reflecting increased demand in pig meat export markets.

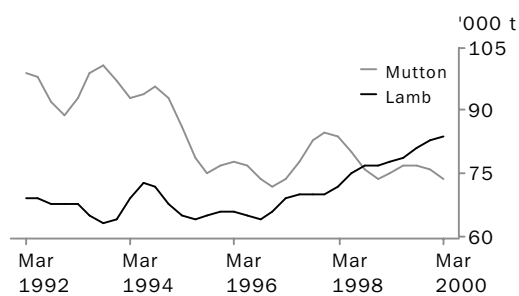
# MEAT PRODUCTION: Trend

## BEEF



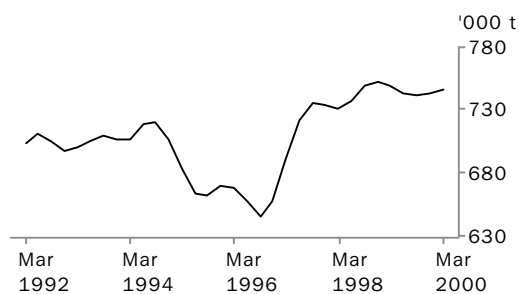
The trend estimate for beef production remained steady at 487,000 tonnes in March quarter 2000.

## MUTTON AND LAMB



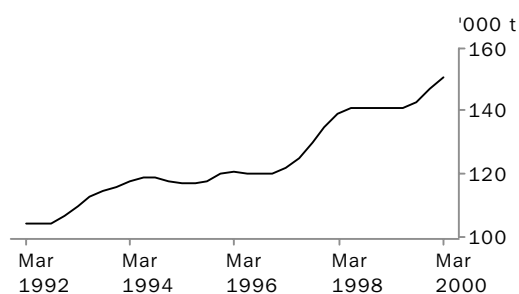
The trend estimate for mutton production fell by 2% in March quarter 2000 to 73,800 tonnes. The trend estimate for lamb production increased 2% to 84,400 tonnes in March quarter 2000, the ninth consecutive quarterly increase.

## TOTAL RED MEAT



The trend estimate for total red meat production remained steady at 746,000 tonnes in March quarter 2000.

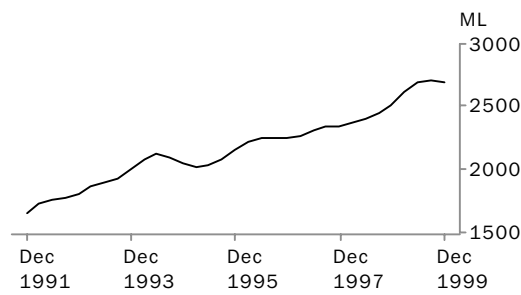
## CHICKEN MEAT



The trend estimate for chicken meat production rose 3% in March quarter 2000 to 151,000 tonnes, the highest quarterly chicken meat production on record.

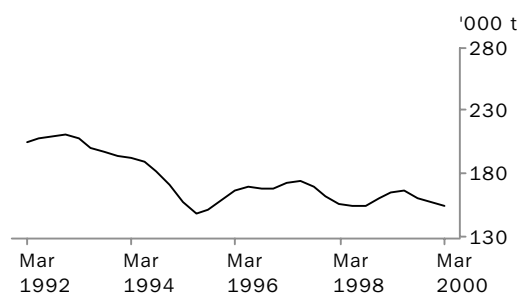
# LIVESTOCK PRODUCTS: Trend

WHOLE MILK INTAKE BY FACTORIES



The trend estimate for whole milk intake by factories fell slightly in December quarter 1999 to 2.7 billion litres. This was primarily due to a drop in Victorian production resulting from dry conditions in that State.

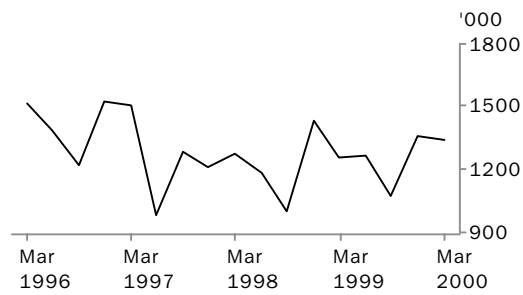
BROKERS AND DEALERS RECEIVALS OF TAXABLE WOOL



The trend estimate for wool receivals by brokers and dealers for March quarter 2000 fell 2% to 154,000 tonnes, continuing the general downward trend from the early 1990s.

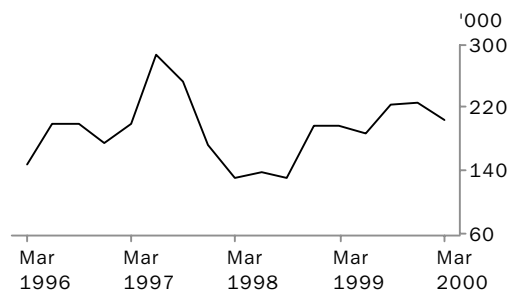
# LIVESTOCK EXPORTS: Original

## EXPORTS OF LIVE SHEEP



Live sheep exports fell 1% in March quarter 2000 to 1.3 million, however a 5% increase in unit value (\$37.93) led to a 4% rise in gross value to \$51.0 million.

## EXPORTS OF LIVE CATTLE



Live cattle exports fell 9% in March quarter 2000 to 205,000. The 4% rise in unit value (\$537.26) dampened the affect on gross value which decreased by 5% to \$110.3 million.

## LIVESTOCK SLAUGHTERED, Australia(a): All Series

Quarter	Bulls, bullocks and steers	Cows and heifers	Total cattle (excluding calves)	Calves	Sheep	Lambs	Pigs	Chickens
	'000	'000	'000	'000	'000	'000	'000	'000
ORIGINAL								
<b>1998</b>								
December	994.4	1 006.2	2 000.6	205.1	3 918.6	4 203.2	1 301.4	95 390.8
<b>1999</b>								
March	968.0	972.3	1 940.3	116.6	3 999.8	3 871.9	1 238.0	94 466.7
June	929.2	1 017.4	1 946.5	253.6	3 339.4	3 898.7	1 311.4	92 162.1
September	1 009.2	909.7	1 918.9	565.4	3 239.1	4 221.3	1 253.6	94 143.4
December	1 015.5	831.1	1 846.6	176.0	3 694.2	4 357.8	1 234.2	100 146.8
<b>2000</b>								
March	920.3	885.9	1 806.3	132.8	4 048.4	4 236.1	1 229.4	98 716.1
SEASONALLY ADJUSTED								
<b>1998</b>								
December	989.1	1 068.2	2 057.2	294.9	3 551.4	3 969.6	1 292.4	93 294.2
<b>1999</b>								
March	986.4	1 014.1	2 000.6	258.5	3 538.1	3 982.0	1 307.5	94 493.5
June	931.1	932.1	1 863.2	272.0	3 619.7	4 005.7	1 270.4	93 484.1
September	995.7	903.9	1 899.7	294.1	3 842.6	4 237.9	1 231.8	95 206.3
December	1 010.2	882.3	1 892.5	253.2	3 349.5	4 115.5	1 239.5	97 744.4
<b>2000</b>								
March	936.5	923.3	1 859.9	294.5	3 579.0	4 358.0	1 276.5	98 478.5
TREND ESTIMATES								
<b>1998</b>								
December	975.7	1 054.5	2 030.2	282.9	3 545.0	4 003.7	1 306.3	93 596.2
<b>1999</b>								
March	971.0	1 007.4	1 978.4	276.7	3 597.0	4 010.5	1 291.2	93 735.4
June	972.1	945.7	1 917.8	271.6	3 638.2	4 043.9	1 266.7	94 237.8
September	979.2	907.2	1 886.4	274.4	3 632.6	4 137.8	1 248.5	95 488.7
December	981.1	897.1	1 878.3	277.8	3 567.5	4 220.9	1 246.5	97 090.4
<b>2000</b>								
March	972.6	903.2	1 875.8	280.4	3 496.3	4 276.2	1 258.5	98 728.8

(a) For more information refer to paragraphs 5 to 9 of the Explanatory Notes.

## RED MEAT.....

Quarter	Beef	Veal	Mutton	Lamb	Pig meat	Total red meat	Chicken meat	Whole milk intake by factories	Brokers and dealers receipts of taxable wool
	tonnes	tonnes	tonnes	tonnes	tonnes	tonnes	tonnes	ML	tonnes
ORIGINAL									
<b>1998</b>									
December	495 768	7 683	84 583	81 115	91 314	760 463	141 603	3 501	195 422
<b>1999</b>									
March	491 261	5 693	83 013	75 243	86 948	742 157	140 851	2 529	144 929
June	489 576	9 001	68 253	76 596	96 526	739 951	139 070	1 814	121 375
September	492 782	14 040	68 835	82 346	90 382	748 384	141 684	2 551	180 276
December	482 582	6 689	80 723	84 744	88 357	743 096	151 052	3 731	196 699
<b>2000</b>									
March	472 296	6 397	84 241	84 506	88 130	735 570	150 602	n.a.	134 985
SEASONALLY ADJUSTED									
<b>1998</b>									
December	502 580	9 949	74 846	76 681	92 284	756 340	138 833	2 471	159 435
<b>1999</b>									
March	502 157	8 196	73 820	76 963	93 026	754 162	142 569	2 583	165 371
June	476 579	9 069	75 740	78 367	91 573	731 328	141 155	2 754	173 349
September	489 517	9 110	81 588	83 360	88 404	751 979	140 906	2 725	154 001
December	489 287	8 660	71 430	80 085	89 392	738 854	147 944	2 633	158 523
<b>2000</b>									
March	482 306	9 213	74 885	86 491	94 249	747 144	152 557	n.a.	154 566
TREND									
<b>1998</b>									
December	498 900	9 498	74 300	77 471	93 012	753 181	140 902	2 515	160 129
<b>1999</b>									
March	495 688	8 951	75 481	77 914	92 340	750 374	140 698	2 611	165 300
June	488 902	8 776	76 513	78 849	90 740	743 780	141 053	2 687	165 848
September	485 818	8 886	76 803	81 014	89 853	742 374	143 310	2 711	161 192
December	485 934	8 997	75 553	82 927	90 442	743 853	147 009	2 688	156 635
<b>2000</b>									
March	486 555	8 993	73 814	84 354	92 089	745 805	151 388	n.a.	154 087

(a) For more information refer to paragraphs 5 to 9 and 13 to 15 of the Explanatory Notes.



## NUMBER OF LIVESTOCK SLAUGHTERED(a), Bulls, Bullocks and Steers: All Series

	<i>New South Wales</i>	<i>Victoria</i>	<i>Queensland</i>	<i>South Australia</i>	<i>Western Australia</i>	<i>Tasmania</i>	<i>Australia</i>
<i>Quarter</i>	'000	'000	'000	'000	'000	'000	'000
ORIGINAL							
<b>1998</b>							
December	198.0	229.6	440.3	35.4	66.6	22.4	994.4
<b>1999</b>							
March	200.5	238.7	431.7	27.9	45.9	23.0	968.0
June	172.8	191.9	463.1	30.1	40.3	28.5	929.2
September	187.3	173.6	536.7	37.1	42.2	26.5	1 009.2
December	196.7	189.0	502.1	44.5	55.8	26.0	1 015.5
<b>2000</b>							
March	192.2	192.9	416.1	46.7	42.3	29.9	920.3
SEASONALLY ADJUSTED							
<b>1998</b>							
December	197.8	222.3	463.4	29.8	53.1	22.5	989.1
<b>1999</b>							
March	196.0	215.8	491.2	26.1	46.9	19.8	986.4
June	175.4	198.0	448.4	31.9	45.0	27.6	931.1
September	189.5	196.6	473.0	46.4	48.5	32.7	995.7
December	196.4	183.9	528.8	37.4	44.3	26.1	1 010.2
<b>2000</b>							
March	187.6	173.5	471.7	43.7	43.3	25.7	936.5
TREND ESTIMATES							
<b>1998</b>							
December	199.8	218.6	455.5	29.7	50.9	22.5	975.7
<b>1999</b>							
March	189.8	213.2	468.1	29.4	48.4	23.5	971.0
June	185.3	203.8	474.4	33.6	46.7	26.6	972.1
September	187.3	193.3	482.4	39.2	45.9	28.9	979.2
December	190.5	184.0	492.9	42.1	45.2	28.3	981.1
<b>2000</b>							
March	193.3	176.6	498.6	42.7	44.0	26.2	972.6

(a) For more information refer to paragraph 4 of the Explanatory Notes.

## NUMBER OF LIVESTOCK SLAUGHTERED(a), Cows and Heifers: All Series

	<i>New South Wales</i>	<i>Victoria</i>	<i>Queensland</i>	<i>South Australia</i>	<i>Western Australia</i>	<i>Tasmania</i>	<i>Australia</i>
<i>Quarter</i>	'000	'000	'000	'000	'000	'000	'000
ORIGINAL							
<b>1998</b>							
December	274.3	251.9	339.0	41.4	65.6	28.0	1 006.2
<b>1999</b>							
March	282.2	221.4	337.5	38.2	61.0	30.9	972.3
June	273.0	196.9	415.2	34.7	53.6	33.5	1 017.4
September	250.7	181.1	355.4	34.9	54.0	21.4	909.7
December	228.0	200.3	287.4	30.6	56.2	25.7	831.1
<b>2000</b>							
March	242.7	208.1	313.3	38.6	52.8	29.3	885.9
SEASONALLY ADJUSTED							
<b>1998</b>							
December	285.5	244.1	407.0	41.8	59.7	29.2	1 068.2
<b>1999</b>							
March	283.8	214.8	382.4	36.4	54.1	28.5	1 014.1
June	254.6	192.1	359.0	32.8	63.4	26.8	932.1
September	258.7	198.8	315.8	38.7	58.1	30.1	903.9
December	236.7	194.0	344.7	30.8	51.2	26.8	882.3
<b>2000</b>							
March	241.5	201.8	354.7	36.9	46.8	27.1	923.3
TREND ESTIMATES							
<b>1998</b>							
December	289.5	237.5	389.2	40.9	59.9	30.2	1 054.5
<b>1999</b>							
March	275.8	218.1	381.5	37.0	58.8	28.5	1 007.4
June	263.5	199.8	355.3	35.1	59.1	28.0	945.7
September	251.8	194.8	337.5	34.6	57.2	28.1	907.2
December	243.4	196.5	338.1	34.7	52.6	27.8	897.1
<b>2000</b>							
March	238.8	199.6	346.8	35.0	47.8	27.2	903.2

(a) For more information refer to paragraph 4 of the Explanatory Notes.

## NUMBER OF LIVESTOCK SLAUGHTERED(a), Total Cattle (excluding Calves): All Series

	<i>New South Wales</i>	<i>Victoria</i>	<i>Queensland</i>	<i>South Australia</i>	<i>Western Australia</i>	<i>Tasmania</i>	<i>Australia</i>
<i>Quarter</i>	'000	'000	'000	'000	'000	'000	'000
ORIGINAL							
<b>1998</b>							
December	472.4	481.4	779.3	76.9	132.3	50.4	2 000.6
<b>1999</b>							
March	482.7	460.1	769.2	66.1	106.9	53.9	1 940.3
June	445.7	388.7	878.2	64.9	93.9	62.0	1 946.5
September	438.0	354.6	892.1	72.0	96.1	47.8	1 918.9
December	424.6	389.3	789.5	75.0	112.0	51.6	1 846.6
<b>2000</b>							
March	434.9	400.9	729.5	85.3	95.1	59.2	1 806.3
SEASONALLY ADJUSTED							
<b>1998</b>							
December	483.4	466.4	870.4	71.6	112.8	51.7	2 057.2
<b>1999</b>							
March	479.8	430.7	873.5	62.4	100.9	48.3	2 000.6
June	430.0	390.1	807.4	64.7	108.4	54.4	1 863.2
September	448.2	395.4	788.8	85.1	106.6	62.8	1 899.7
December	433.1	377.9	873.5	68.2	95.6	52.9	1 892.5
<b>2000</b>							
March	429.2	375.3	826.4	80.7	90.1	52.8	1 859.9
TREND ESTIMATES							
<b>1998</b>							
December	489.3	456.1	844.7	70.6	110.8	52.7	2 030.2
<b>1999</b>							
March	465.6	431.2	849.6	66.4	107.2	52.0	1 978.4
June	448.8	403.6	829.6	68.7	105.8	54.6	1 917.8
September	439.1	388.0	819.9	73.7	103.1	57.0	1 886.4
December	434.0	380.5	831.1	76.8	97.8	56.1	1 878.3
<b>2000</b>							
March	432.2	376.1	845.4	77.7	91.8	53.4	1 875.8

(a) For more information refer to paragraph 4 of the Explanatory Notes.

## NUMBER OF LIVESTOCK SLAUGHTERED(a), Calves: All Series

	<i>New South Wales</i>	<i>Victoria</i>	<i>Queensland</i>	<i>South Australia</i>	<i>Western Australia</i>	<i>Tasmania</i>	<i>Australia</i>
<i>Quarter</i>	'000	'000	'000	'000	'000	'000	'000
ORIGINAL							
<b>1998</b>							
December	60.9	104.3	25.7	3.8	1.6	8.7	205.1
<b>1999</b>							
March	56.1	26.9	26.2	4.9	1.6	0.8	116.6
June	61.0	146.9	33.4	5.8	1.8	4.5	253.6
September	51.3	415.9	33.4	6.2	2.3	56.1	565.4
December	48.3	79.9	32.6	3.2	3.0	8.8	176.0
<b>2000</b>							
March	56.2	32.2	36.6	3.6	2.9	1.2	132.8
SEASONALLY ADJUSTED							
<b>1998</b>							
December	69.0	179.3	27.4	5.1	1.5	13.0	294.9
<b>1999</b>							
March	56.2	172.7	26.8	6.4	1.6	15.0	258.5
June	57.5	162.3	31.6	4.4	2.0	13.9	272.0
September	48.3	176.5	32.3	5.2	2.1	19.1	294.1
December	54.8	137.3	34.8	4.4	2.9	12.9	253.2
<b>2000</b>							
March	56.4	205.7	37.6	4.7	3.0	21.5	294.5
TREND ESTIMATES							
<b>1998</b>							
December	63.7	173.2	26.7	5.3	1.5	14.0	282.9
<b>1999</b>							
March	58.9	175.8	28.3	5.4	1.7	14.4	276.7
June	54.8	165.1	30.3	5.2	1.9	15.1	271.6
September	52.6	162.2	32.7	4.8	2.3	16.0	274.4
December	53.5	168.1	35.0	4.6	2.7	17.1	277.8
<b>2000</b>							
March	54.9	180.5	37.1	4.6	3.0	18.6	280.4

(a) For more information refer to paragraph 4 of the Explanatory Notes.

## NUMBER OF LIVESTOCK SLAUGHTERED(a), Sheep: All Series

	<i>New South Wales</i>	<i>Victoria</i>	<i>Queensland</i>	<i>South Australia</i>	<i>Western Australia</i>	<i>Tasmania</i>	<i>Australia</i>
<i>Quarter</i>	'000	'000	'000	'000	'000	'000	'000
ORIGINAL							
<b>1998</b>							
December	1 506.8	828.4	317.7	642.4	505.2	118.0	3 918.6
<b>1999</b>							
March	1 445.7	867.2	358.2	591.9	580.7	156.3	3 999.8
June	1 313.3	756.9	338.1	358.6	462.0	110.5	3 339.4
September	1 320.5	767.6	419.4	239.3	407.0	85.4	3 239.1
December	1 336.8	1 012.4	328.6	359.8	504.9	151.8	3 694.2
<b>2000</b>							
March	1 416.5	1 132.4	357.5	377.4	564.5	200.0	4 048.4
SEASONALLY ADJUSTED							
<b>1998</b>							
December	1 436.7	706.1	319.5	542.2	440.4	112.8	3 551.4
<b>1999</b>							
March	1 328.6	718.9	338.0	466.8	540.1	113.4	3 538.1
June	1 362.5	906.9	365.2	438.4	510.1	108.8	3 619.7
September	1 471.5	971.3	413.1	329.8	466.2	154.7	3 842.6
December	1 274.3	865.2	329.4	303.7	441.0	145.1	3 349.5
<b>2000</b>							
March	1 300.8	938.8	337.2	297.0	524.7	144.6	3 579.0
TREND ESTIMATES							
<b>1998</b>							
December	1 397.4	728.7	318.5	532.4	467.9	105.1	3 545.0
<b>1999</b>							
March	1 387.1	777.1	345.7	481.0	495.5	112.6	3 597.0
June	1 381.3	861.0	371.1	412.8	500.7	124.4	3 638.2
September	1 375.7	917.9	374.1	353.4	479.3	137.7	3 632.6
December	1 342.8	926.9	358.1	310.0	471.7	147.0	3 567.5
<b>2000</b>							
March	1 293.5	915.0	335.5	284.1	487.1	150.3	3 496.3

(a) For more information refer to paragraph 4 of the Explanatory Notes.

## NUMBER OF LIVESTOCK SLAUGHTERED(a), Lambs: All Series

	<i>New South Wales</i>	<i>Victoria</i>	<i>Queensland</i>	<i>South Australia</i>	<i>Western Australia</i>	<i>Tasmania</i>	<i>Australia</i>
<i>Quarter</i>	'000	'000	'000	'000	'000	'000	'000
ORIGINAL							
<b>1998</b>							
December	983.6	1 786.2	184.1	531.6	614.4	103.3	4 203.2
<b>1999</b>							
March	909.5	1 667.2	187.2	494.4	478.7	134.9	3 871.9
June	980.4	1 501.0	185.4	598.4	505.5	127.9	3 898.7
September	1 047.0	1 714.5	227.3	568.8	553.4	110.4	4 221.3
December	985.8	1 855.6	205.3	576.2	633.6	101.5	4 357.8
<b>2000</b>							
March	922.2	1 748.9	239.6	657.0	528.6	139.8	4 236.1
SEASONALLY ADJUSTED							
<b>1998</b>							
December	981.2	1 635.8	194.9	501.4	551.6	113.1	3 969.6
<b>1999</b>							
March	941.6	1 689.7	189.5	501.2	557.1	116.6	3 982.0
June	1 001.7	1 589.7	188.4	569.0	510.1	113.9	4 005.7
September	994.4	1 758.0	209.9	630.5	533.3	137.0	4 237.9
December	981.8	1 698.9	217.6	543.0	570.1	111.2	4 115.5
<b>2000</b>							
March	956.1	1 770.0	242.1	666.9	613.8	120.7	4 358.0
TREND ESTIMATES							
<b>1998</b>							
December	972.4	1 683.6	188.8	522.2	524.6	113.2	4 003.7
<b>1999</b>							
March	974.2	1 659.1	190.2	530.9	541.5	116.1	4 010.5
June	983.0	1 655.4	194.2	555.0	533.4	121.0	4 043.9
September	989.4	1 694.7	205.8	587.2	539.1	122.7	4 137.8
December	981.5	1 730.1	221.8	607.6	568.6	121.4	4 220.9
<b>2000</b>							
March	966.0	1 759.7	236.2	625.1	600.0	119.0	4 276.2

(a) For more information refer to paragraph 4 of the Explanatory Notes.

## NUMBER OF LIVESTOCK SLAUGHTERED(a), Pigs: All Series

	<i>New South Wales</i>	<i>Victoria</i>	<i>Queensland</i>	<i>South Australia</i>	<i>Western Australia</i>	<i>Tasmania</i>	<i>Australia</i>
<i>Quarter</i>	'000	'000	'000	'000	'000	'000	'000
ORIGINAL							
<b>1998</b>							
December	349.2	404.0	281.0	110.4	135.1	19.5	1 301.4
<b>1999</b>							
March	331.5	346.7	263.7	126.0	150.3	18.4	1 238.0
June	335.5	394.9	289.6	128.3	138.8	22.1	1 311.4
September	331.1	376.3	268.2	111.8	143.6	20.0	1 253.6
December	340.7	364.8	272.6	109.3	128.0	16.5	1 234.2
<b>2000</b>							
March	349.7	358.7	276.5	120.3	105.8	16.4	1 229.4
SEASONALLY ADJUSTED							
<b>1998</b>							
December	338.4	393.1	283.7	116.3	142.4	18.8	1 292.4
<b>1999</b>							
March	351.1	380.2	271.8	129.5	152.4	19.7	1 307.5
June	329.6	379.8	280.0	125.4	131.7	21.0	1 270.4
September	331.6	362.7	266.7	106.5	142.8	20.1	1 231.8
December	328.8	363.6	277.4	114.5	134.3	16.2	1 239.5
<b>2000</b>							
March	368.4	382.5	280.6	122.7	106.2	17.0	1 276.5
TREND ESTIMATES							
<b>1998</b>							
December	339.7	399.8	284.6	116.0	144.9	20.1	1 306.3
<b>1999</b>							
March	339.4	384.0	279.0	122.9	144.0	20.1	1 291.2
June	334.8	372.1	272.6	121.7	142.6	20.1	1 266.7
September	332.1	368.2	273.4	115.5	137.2	19.3	1 248.5
December	339.8	368.9	275.6	114.4	127.9	17.7	1 246.5
<b>2000</b>							
March	355.4	373.4	278.3	117.6	116.2	16.3	1 258.5

(a) For more information refer to paragraph 4 of the Explanatory Notes.

## NUMBER OF CHICKENS SLAUGHTERED(a): All Series

Quarter	<i>New South Wales</i>	<i>Victoria</i>	<i>Queensland</i>	<i>South Australia</i>	<i>Western Australia</i>	<i>Australia</i>
	'000	'000	'000	'000	'000	'000
ORIGINAL						
<b>1998</b>						
December	35 911.0	24 402.2	16 882.5	n.p.	n.p.	95 390.8
<b>1999</b>						
March	35 774.0	23 560.8	16 760.1	n.p.	n.p.	94 466.7
June	32 570.1	24 517.7	16 371.5	n.p.	n.p.	92 162.1
September	32 171.0	25 289.5	16 449.0	n.p.	n.p.	94 143.4
December	35 764.0	26 951.9	18 232.3	n.p.	n.p.	100 146.8
<b>2000</b>						
March	35 561.0	26 498.0	17 174.4	n.p.	n.p.	98 716.1
SEASONALLY ADJUSTED						
<b>1998</b>						
December	35 563.6	23 632.8	16 412.6	n.p.	n.p.	93 294.2
<b>1999</b>						
March	35 809.3	23 562.6	16 756.5	n.p.	n.p.	94 493.5
June	33 210.7	24 457.0	16 813.9	n.p.	n.p.	93 484.1
September	31 985.5	26 182.7	16 478.7	n.p.	n.p.	95 206.3
December	35 296.4	26 094.2	17 716.6	n.p.	n.p.	97 744.4
<b>2000</b>						
March	35 303.3	26 521.0	17 186.0	n.p.	n.p.	98 478.5
TREND ESTIMATES						
<b>1998</b>						
December	35 840.8	23 578.1	16 412.0	n.p.	n.p.	93 596.2
<b>1999</b>						
March	34 860.8	23 864.1	16 555.3	n.p.	n.p.	93 735.4
June	33 596.4	24 660.1	16 753.7	n.p.	n.p.	94 237.8
September	33 400.9	25 599.6	16 942.7	n.p.	n.p.	95 488.7
December	34 167.3	26 258.2	17 191.2	n.p.	n.p.	97 090.4
<b>2000</b>						
March	35 420.1	26 625.5	17 411.5	n.p.	n.p.	98 728.8

(a) For more information refer to paragraphs 8 to 9 of the Explanatory Notes.



## NUMBER OF LIVESTOCK SLAUGHTERED(a): Original

Quarter	New South Wales	Victoria	Queensland	South Australia	Western Australia	Tasmania	Australia
	'000	'000	'000	'000	'000	'000	'000
<b>BULLS, BULLOCKS AND STEERS</b>							
<b>1996-1997</b>	1 073.3	898.7	1 509.3	171.1	192.3	109.4	<b>3 967.7</b>
<b>1997-1998</b>	956.5	901.4	1 660.9	169.6	196.0	93.4	<b>3 993.6</b>
<b>1998-1999</b>	780.9	852.1	1 807.6	123.1	197.9	94.8	<b>3 870.7</b>
<b>COWS AND HEIFERS</b>							
<b>1996-1997</b>	966.9	777.2	1 008.5	197.6	214.5	93.2	<b>3 302.8</b>
<b>1997-1998</b>	1 182.1	896.6	1 353.7	202.8	252.1	123.6	<b>4 058.1</b>
<b>1998-1999</b>	1 113.6	899.2	1 498.7	154.7	240.8	116.3	<b>4 067.6</b>
<b>TOTAL CATTLE (excluding calves)</b>							
<b>1996-1997</b>	2 040.2	1 675.9	2 517.9	368.7	406.8	202.6	<b>7 270.5</b>
<b>1997-1998</b>	2 138.6	1 798.0	3 014.6	372.4	448.1	217.0	<b>8 051.7</b>
<b>1998-1999</b>	1 894.5	1 751.3	3 306.3	277.8	438.7	211.1	<b>7 938.3</b>
<b>CALVES</b>							
<b>1996-1997</b>	257.4	697.3	120.9	15.7	5.6	43.5	<b>1 141.2</b>
<b>1997-1998</b>	306.2	767.2	114.9	20.2	5.6	53.9	<b>1 268.7</b>
<b>1998-1999</b>	242.6	714.4	112.8	20.0	6.4	61.0	<b>1 158.0</b>
<b>SHEEP</b>							
<b>1996-1997</b>	5 241.3	2 806.6	977.3	2 311.8	2 635.2	367.7	<b>14 339.9</b>
<b>1997-1998</b>	5 902.7	3 285.6	1 277.1	2 655.0	2 717.4	461.0	<b>16 298.8</b>
<b>1998-1999</b>	5 583.2	3 079.6	1 333.8	2 018.3	1 938.0	439.9	<b>14 392.7</b>
<b>LAMBS</b>							
<b>1996-1997</b>	3 621.4	5 978.9	785.1	1 754.0	2 081.2	358.2	<b>14 578.7</b>
<b>1997-1998</b>	3 695.2	6 385.7	765.7	1 865.8	1 856.5	423.3	<b>14 992.1</b>
<b>1998-1999</b>	3 913.2	6 699.4	756.7	2 153.5	2 076.4	480.1	<b>16 079.4</b>
<b>PIGS</b>							
<b>1996-1997</b>	1 338.4	1 397.2	1 002.3	427.4	550.2	73.3	<b>4 795.6</b>
<b>1997-1998</b>	1 392.0	1 567.7	1 082.7	413.8	550.0	78.1	<b>5 091.3</b>
<b>1998-1999</b>	1 347.1	1 572.8	1 132.4	465.8	568.7	81.2	<b>5 176.3</b>
<b>CHICKENS</b>							
<b>1996-1997</b>	133 363.7	82 086.9	61 088.9	28 008.1	36 360.2	n.p.	<b>340 907.8</b>
<b>1997-1998</b>	135 651.5	92 935.0	66 129.8	32 712.8	36 804.6	n.p.	<b>364 233.7</b>
<b>1998-1999</b>	140 794.0	95 543.3	65 989.7	33 536.7	39 115.8	n.p.	<b>374 979.5</b>

(a) For more information refer to paragraphs 4, 5 and 7 to 9 of the Explanatory Notes.

## RED MEAT PRODUCED(a), Beef: All Series

	<i>New South Wales</i>	<i>Victoria</i>	<i>Queensland</i>	<i>South Australia</i>	<i>Western Australia</i>	<i>Tasmania</i>	<i>Australia</i>
<i>Quarter</i>	<i>tonnes</i>	<i>tonnes</i>	<i>tonnes</i>	<i>tonnes</i>	<i>tonnes</i>	<i>tonnes</i>	<i>tonnes</i>
ORIGINAL							
<b>1998</b>							
December	108 087	109 256	213 671	17 609	32 820	12 894	495 768
<b>1999</b>							
March	114 408	107 166	215 072	14 780	25 840	13 699	491 261
June	105 271	88 812	240 345	14 717	21 592	16 072	489 576
September	105 945	80 139	250 573	17 107	22 568	12 889	492 782
December	107 148	91 365	223 191	18 401	27 780	13 812	482 582
<b>2000</b>							
March	111 488	93 437	206 293	21 743	23 147	15 907	472 296
SEASONALLY ADJUSTED							
<b>1998</b>							
December	109 039	104 914	234 048	15 956	28 018	12 876	502 580
<b>1999</b>							
March	112 156	99 224	241 744	13 745	23 882	12 185	502 157
June	103 770	91 397	224 771	14 660	25 638	14 264	476 579
September	109 018	88 377	222 423	20 871	25 261	17 205	489 517
December	108 059	87 769	244 709	16 671	23 803	13 782	489 287
<b>2000</b>							
March	109 122	86 468	231 309	20 278	21 306	14 173	482 306
TREND ESTIMATES							
<b>1998</b>							
December	110 870	102 936	229 169	15 650	26 784	12 914	498 900
<b>1999</b>							
March	108 630	98 916	233 670	14 892	25 749	13 259	495 688
June	107 480	92 980	231 340	15 854	25 182	14 416	488 902
September	107 448	89 011	230 041	17 703	24 684	15 226	485 818
December	108 169	87 236	233 236	18 957	23 636	15 007	485 934
<b>2000</b>							
March	109 367	86 631	237 266	19 399	22 113	14 254	486 555

(a) For more information refer to paragraph 4 to 6 of the Explanatory Notes.

## RED MEAT PRODUCED(a), Veal: All Series

	<i>New South Wales</i>	<i>Victoria</i>	<i>Queensland</i>	<i>South Australia</i>	<i>Western Australia</i>	<i>Tasmania</i>	<i>Australia</i>
<i>Quarter</i>	<i>tonnes</i>	<i>tonnes</i>	<i>tonnes</i>	<i>tonnes</i>	<i>tonnes</i>	<i>tonnes</i>	<i>tonnes</i>
ORIGINAL							
<b>1998</b>							
December	3 775	2 177	1 308	127	104	181	7 683
<b>1999</b>							
March	3 416	635	1 344	153	108	25	5 693
June	3 830	2 895	1 869	161	133	101	9 001
September	3 086	8 088	1 422	160	180	1 090	14 040
December	2 983	1 643	1 530	92	249	179	6 689
<b>2000</b>							
March	3 461	739	1 815	98	239	33	6 397
SEASONALLY ADJUSTED							
<b>1998</b>							
December	4 378	3 477	1 406	158	98	249	9 949
<b>1999</b>							
March	3 431	3 037	1 337	188	119	269	8 196
June	3 509	3 209	1 777	132	148	269	9 069
September	2 933	3 575	1 406	136	160	389	9 110
December	3 460	2 624	1 642	115	235	246	8 660
<b>2000</b>							
March	3 480	3 554	1 807	121	262	356	9 213
TREND ESTIMATES							
<b>1998</b>							
December	4 161	3 354	1 395	166	98	273	9 498
<b>1999</b>							
March	3 627	3 310	1 473	161	116	273	8 951
June	3 316	3 193	1 530	150	142	293	8 776
September	3 226	3 183	1 580	132	178	314	8 886
December	3 315	3 184	1 642	121	221	320	8 997
<b>2000</b>							
March	3 425	3 213	1 713	118	260	324	8 993

(a) For more information refer to paragraph 4 to 6 of the Explanatory Notes.

## RED MEAT PRODUCED(a), Mutton: All Series

	<i>New South Wales</i>	<i>Victoria</i>	<i>Queensland</i>	<i>South Australia</i>	<i>Western Australia</i>	<i>Tasmania</i>	<i>Australia</i>
<i>Quarter</i>	<i>tonnes</i>	<i>tonnes</i>	<i>tonnes</i>	<i>tonnes</i>	<i>tonnes</i>	<i>tonnes</i>	<i>tonnes</i>
ORIGINAL							
<b>1998</b>							
December	32 325	17 063	6 416	15 737	10 731	2 311	<b>84 583</b>
<b>1999</b>							
March	29 705	17 232	6 957	14 029	11 938	3 152	<b>83 013</b>
June	27 612	14 840	6 399	7 915	9 285	2 203	<b>68 253</b>
September	29 431	15 813	8 038	5 654	8 209	1 690	<b>68 835</b>
December	30 511	21 213	6 706	8 714	10 485	3 094	<b>80 723</b>
<b>2000</b>							
March	31 059	21 994	6 917	8 810	11 458	4 002	<b>84 241</b>
SEASONALLY ADJUSTED							
<b>1998</b>							
December	30 150	14 139	6 292	12 944	9 325	2 215	<b>74 846</b>
<b>1999</b>							
March	27 516	14 548	6 523	11 174	11 023	2 312	<b>73 820</b>
June	29 019	18 140	7 158	10 059	10 293	2 090	<b>75 740</b>
September	32 871	19 902	7 918	7 653	9 502	3 170	<b>81 588</b>
December	28 439	17 613	6 553	7 166	9 120	2 968	<b>71 430</b>
<b>2000</b>							
March	28 764	18 574	6 486	7 002	10 572	2 923	<b>74 885</b>
TREND ESTIMATES							
<b>1998</b>							
December	29 126	14 565	6 233	12 720	9 670	2 102	<b>74 300</b>
<b>1999</b>							
March	29 228	15 664	6 740	11 417	10 159	2 212	<b>75 481</b>
June	29 642	17 448	7 206	9 629	10 207	2 489	<b>76 513</b>
September	30 244	18 637	7 278	8 208	9 758	2 785	<b>76 803</b>
December	29 914	18 739	6 975	7 250	9 626	2 992	<b>75 553</b>
<b>2000</b>							
March	28 905	18 336	6 547	6 728	9 915	3 055	<b>73 814</b>

(a) For more information refer to paragraph 4 to 6 of the Explanatory Notes.

## RED MEAT PRODUCED(a), Lamb: All Series

	<i>New South Wales</i>	<i>Victoria</i>	<i>Queensland</i>	<i>South Australia</i>	<i>Western Australia</i>	<i>Tasmania</i>	<i>Australia</i>
<i>Quarter</i>	<i>tonnes</i>	<i>tonnes</i>	<i>tonnes</i>	<i>tonnes</i>	<i>tonnes</i>	<i>tonnes</i>	<i>tonnes</i>
ORIGINAL							
<b>1998</b>							
December	19 338	33 649	3 526	10 997	11 643	1 962	81 115
<b>1999</b>							
March	18 021	32 019	3 429	10 101	9 100	2 573	75 243
June	19 643	29 209	3 436	12 337	9 465	2 507	76 596
September	20 539	33 468	4 286	11 492	10 388	2 173	82 346
December	19 297	35 817	3 902	11 944	11 839	1 945	84 744
<b>2000</b>							
March	18 222	34 616	4 628	14 475	9 881	2 685	84 506
SEASONALLY ADJUSTED							
<b>1998</b>							
December	19 323	30 877	3 731	10 330	10 542	2 136	76 681
<b>1999</b>							
March	18 676	32 196	3 450	10 072	10 519	2 258	76 963
June	20 020	30 257	3 553	11 524	9 488	2 278	78 367
September	19 514	35 247	3 953	13 340	10 043	2 584	83 360
December	19 233	32 849	3 975	11 199	10 726	2 122	80 085
<b>2000</b>							
March	18 923	34 794	4 628	14 452	11 407	2 352	86 491
TREND ESTIMATES							
<b>1998</b>							
December	19 122	32 179	3 531	10 756	9 904	2 305	77 471
<b>1999</b>							
March	19 347	31 710	3 565	10 818	10 224	2 273	77 914
June	19 506	31 923	3 620	11 317	10 032	2 321	78 849
September	19 525	33 154	3 835	12 189	10 108	2 364	81 014
December	19 305	33 979	4 153	12 831	10 651	2 326	82 927
<b>2000</b>							
March	18 983	34 471	4 440	13 343	11 216	2 287	84 354

(a) For more information refer to paragraph 4 to 6 of the Explanatory Notes.

## RED MEAT PRODUCED(a), Pig Meat: All Series

	<i>New South Wales</i>	<i>Victoria</i>	<i>Queensland</i>	<i>South Australia</i>	<i>Western Australia</i>	<i>Tasmania</i>	<i>Australia</i>
<i>Quarter</i>	<i>tonnes</i>	<i>tonnes</i>	<i>tonnes</i>	<i>tonnes</i>	<i>tonnes</i>	<i>tonnes</i>	<i>tonnes</i>
ORIGINAL							
<b>1998</b>							
December	25 143	28 732	20 283	7 269	8 563	1 223	91 314
<b>1999</b>							
March	23 541	25 120	19 246	8 031	9 752	1 184	86 948
June	25 293	29 514	21 720	8 782	9 649	1 456	96 526
September	24 337	27 998	19 910	7 294	9 457	1 274	90 382
December	24 785	26 897	19 713	7 504	8 366	992	88 357
<b>2000</b>							
March	25 257	26 122	20 331	8 245	7 056	1 027	88 130
SEASONALLY ADJUSTED							
<b>1998</b>							
December	24 715	28 436	20 803	7 737	9 087	1 237	92 284
<b>1999</b>							
March	25 770	27 621	20 071	8 392	9 971	1 250	93 026
June	23 961	28 038	20 753	8 432	8 976	1 353	91 573
September	24 014	27 222	19 524	6 854	9 412	1 286	88 404
December	24 348	26 657	20 229	8 009	8 889	1 006	89 392
<b>2000</b>							
March	27 663	28 723	21 199	8 604	7 209	1 084	94 249
TREND ESTIMATES							
<b>1998</b>							
December	24 510	28 874	21 075	7 649	9 479	1 296	93 012
<b>1999</b>							
March	24 814	28 036	20 580	8 070	9 470	1 298	92 340
June	24 419	27 442	20 042	8 002	9 470	1 289	90 740
September	24 252	27 316	20 087	7 722	9 151	1 225	89 853
December	25 095	27 450	20 337	7 847	8 522	1 120	90 442
<b>2000</b>							
March	26 540	27 838	20 727	8 232	7 785	1 041	92 089

(a) For more information refer to paragraph 4 to 6 of the Explanatory Notes.

## TOTAL RED MEAT PRODUCED(a): All Series

	<i>New South Wales</i>	<i>Victoria</i>	<i>Queensland</i>	<i>South Australia</i>	<i>Western Australia</i>	<i>Tasmania</i>	<i>Australia</i>
<i>Quarter</i>	<i>tonnes</i>	<i>tonnes</i>	<i>tonnes</i>	<i>tonnes</i>	<i>tonnes</i>	<i>tonnes</i>	<i>tonnes</i>
ORIGINAL							
<b>1998</b>							
December	188 668	190 877	245 203	51 739	63 861	18 570	<b>760 463</b>
<b>1999</b>							
March	189 091	182 171	246 049	47 094	56 737	20 634	<b>742 157</b>
June	181 648	165 270	273 769	43 912	50 124	22 339	<b>739 951</b>
September	183 338	165 506	284 230	41 707	50 802	19 117	<b>748 384</b>
December	184 724	176 935	255 042	46 655	58 718	20 023	<b>743 096</b>
<b>2000</b>							
March	189 486	176 908	239 984	53 370	51 781	23 654	<b>735 570</b>
SEASONALLY ADJUSTED							
<b>1998</b>							
December	187 605	181 843	266 280	47 125	57 070	18 713	<b>756 340</b>
<b>1999</b>							
March	187 549	176 626	273 125	43 571	55 514	18 274	<b>754 162</b>
June	180 279	171 041	258 012	44 807	54 543	20 254	<b>731 328</b>
September	188 350	174 323	255 224	48 854	54 378	24 634	<b>751 979</b>
December	183 539	167 512	277 108	43 160	52 773	20 124	<b>738 854</b>
<b>2000</b>							
March	187 952	172 113	265 429	50 457	50 756	20 888	<b>747 144</b>
TREND ESTIMATES							
<b>1998</b>							
December	187 789	181 908	261 403	46 941	55 935	18 890	<b>753 181</b>
<b>1999</b>							
March	185 646	177 636	266 028	45 358	55 718	19 315	<b>750 374</b>
June	184 363	172 986	263 738	44 952	55 033	20 808	<b>743 780</b>
September	184 695	171 301	262 821	45 954	53 879	21 914	<b>742 374</b>
December	185 798	170 588	266 343	47 006	52 656	21 765	<b>743 853</b>
<b>2000</b>							
March	187 220	170 489	270 693	47 820	51 289	20 961	<b>745 805</b>

(a) For more information refer to paragraph 4 to 6 of the Explanatory Notes.

## CHICKEN MEAT PRODUCED(a): All Series

Quarter	New South Wales tonnes	Victoria tonnes	Queensland tonnes	South Australia tonnes	Western Australia tonnes	Australia tonnes
ORIGINAL						
<b>1998</b>						
December	55 381	39 256	22 151	n.p.	n.p.	141 603
<b>1999</b>						
March	56 024	38 033	22 248	n.p.	n.p.	140 851
June	52 201	38 562	22 645	n.p.	n.p.	139 070
September	50 735	39 708	23 269	n.p.	n.p.	141 684
December	56 035	43 557	25 382	n.p.	n.p.	151 052
<b>2000</b>						
March	57 613	42 308	23 208	n.p.	n.p.	150 602
SEASONALLY ADJUSTED						
<b>1998</b>						
December	55 201	37 879	21 600	n.p.	n.p.	138 833
<b>1999</b>						
March	57 184	38 313	22 408	n.p.	n.p.	142 569
June	52 509	39 837	22 959	n.p.	n.p.	141 155
September	49 488	39 553	23 354	n.p.	n.p.	140 906
December	55 838	41 999	24 756	n.p.	n.p.	147 944
<b>2000</b>						
March	58 945	42 658	23 382	n.p.	n.p.	152 557
TREND ESTIMATES						
<b>1998</b>						
December	56 970	37 998	21 644	n.p.	n.p.	140 902
<b>1999</b>						
March	55 086	38 371	22 181	n.p.	n.p.	140 698
June	52 635	39 279	23 022	n.p.	n.p.	141 053
September	52 533	40 351	23 625	n.p.	n.p.	143 310
December	54 575	41 510	23 953	n.p.	n.p.	147 009
<b>2000</b>						
March	57 873	42 490	24 024	n.p.	n.p.	151 388

(a) For more information refer to paragraphs 8 and 9 of the Explanatory Notes.



## MEAT PRODUCED(a): Original

<i>Financial year</i>	<i>New South Wales</i> tonnes	<i>Victoria</i> tonnes	<i>Queensland</i> tonnes	<i>South Australia</i> tonnes	<i>Western Australia</i> tonnes	<i>Tasmania</i> tonnes	<i>Australia</i> tonnes
BEEF							
<b>1996-1997</b>	471 231	373 818	687 802	85 478	91 369	51 504	<b>1 772 197</b>
<b>1997-1998</b>	473 784	389 086	799 779	80 924	102 482	53 064	<b>1 911 089</b>
<b>1998-1999</b>	437 769	398 815	904 504	62 266	104 979	53 271	<b>1 972 809</b>
VEAL							
<b>1996-1997</b>	16 444	14 293	5 579	514	319	905	<b>38 103</b>
<b>1997-1998</b>	20 818	15 579	5 520	734	312	1 149	<b>44 164</b>
<b>1998-1999</b>	15 630	14 225	5 928	611	436	1 241	<b>38 120</b>
MUTTON							
<b>1996-1997</b>	109 198	55 545	19 646	51 778	52 164	7 820	<b>296 151</b>
<b>1997-1998</b>	119 709	63 470	24 552	58 554	56 442	9 841	<b>332 568</b>
<b>1998-1999</b>	117 416	61 646	26 040	48 029	39 766	8 724	<b>301 621</b>
LAMB							
<b>1996-1997</b>	67 174	111 403	14 348	34 890	35 701	6 765	<b>270 280</b>
<b>1997-1998</b>	69 822	119 973	13 949	38 224	33 581	8 072	<b>283 621</b>
<b>1998-1999</b>	77 138	128 380	14 138	44 172	39 021	9 222	<b>312 072</b>
PIG MEAT							
<b>1996-1997</b>	88 753	99 225	73 809	29 842	38 837	4 832	<b>335 597</b>
<b>1997-1998</b>	95 590	112 504	81 172	28 489	35 499	4 916	<b>358 489</b>
<b>1998-1999</b>	97 185	114 582	84 065	30 864	37 534	5 242	<b>369 862</b>
TOTAL RED MEAT							
<b>1996-1997</b>	752 800	654 284	801 184	202 501	218 389	71 826	<b>2 712 328</b>
<b>1997-1998</b>	779 722	700 612	924 972	206 925	228 317	77 041	<b>2 929 932</b>
<b>1998-1999</b>	745 138	717 648	1 034 675	185 943	221 736	77 700	<b>2 994 484</b>
CHICKEN MEAT							
<b>1996-1997</b>	200 277	121 445	80 485	38 932	46 789	n.p.	<b>487 929</b>
<b>1997-1998</b>	211 603	148 288	88 690	48 192	47 030	n.p.	<b>543 804</b>
<b>1998-1999</b>	223 222	153 601	88 086	49 125	50 237	n.p.	<b>564 270</b>

(a) For more information refer to paragraphs 4 to 9 of the Explanatory Notes.

## EXPORTS OF FRESH, FROZEN AND PROCESSED MEAT, Australia(a): Original

Period	FRESH, CHILLED OR FROZEN MEAT.....								PROCESSED MEAT		
	<i>Beef bone -in</i>	<i>Beef bone -out</i>	<i>Veal bone -in</i>	<i>Veal bone -out</i>	<i>Mutton bone -in</i>	<i>Mutton bone -out</i>	<i>Lamb bone -in</i>	<i>Lamb bone -out</i>	<i>Pork</i>	<i>Bacon and ham</i>	<i>Canned meat</i>
	tonnes	tonnes	tonnes	tonnes	tonnes	tonnes	tonnes	tonnes	tonnes	tonnes	tonnes
<b>1996-1997</b>	48 603	692 105	1 172	3 761	92 744	50 834	53 533	8 350	6 674	320	11 728
<b>1997-1998</b>	46 933	795 942	1 800	5 548	107 839	59 130	62 168	8 750	12 276	149	12 900
<b>1998-1999</b>	60 981	836 575	1 614	6 143	114 773	51 398	71 591	9 334	16 510	168	13 056
<b>1998</b>											
December	13 857	223 043	339	1 816	31 351	15 842	20 502	2 302	4 019	27	3 117
<b>1999</b>											
March	20 008	186 650	273	844	32 544	11 489	17 451	2 058	3 355	7	3 337
June	19 122	203 479	606	1 380	29 999	12 536	17 650	2 653	5 992	31	2 857
September	13 061	208 253	356	2 565	21 313	13 669	18 126	2 450	10 358	49	3 080
December	9 044	216 447	601	2 195	34 905	15 248	22 176	2 837	10 136	14	3 420
<b>2000</b>											
March	11 666	177 791	304	1 284	33 046	13 851	20 248	2 602	8 662	14	3 179

(a) For more information refer to paragraph 10 and 11 of the Explanatory Notes.

## EXPORTS OF LIVE SHEEP AND CATTLE, Australia(a): Original

<i>Period</i>	<i>Number</i> '000	<i>Gross weight</i> '000 tonnes	<i>Gross value</i> \$'000	<i>Unit value</i> \$
SHEEP				
<b>1996-1997</b>	5 237.2	269.8	189 944	36.27
<b>1997-1998</b>	4 961.1	256.0	193 266	38.96
<b>1998-1999</b>	4 958.7	254.9	181 671	36.64
<b>1998</b>				
December	1 429.0	75.0	53 106	37.16
<b>1999</b>				
March	1 259.3	64.4	45 473	36.11
June	1 264.9	63.9	44 396	35.10
September	1 074.8	55.0	41 216	38.35
December	1 361.5	68.4	48 981	35.98
<b>2000</b>				
March	1 343.2	66.6	50 953	37.93
CATTLE				
<b>1996-1997</b>	863.8	313.9	427 721	495.19
<b>1997-1998</b>	694.0	255.4	334 058	481.34
<b>1998-1999</b>	713.0	264.7	342 667	480.57
<b>1998</b>				
December	197.4	74.7	96 865	490.71
<b>1999</b>				
March	196.7	75.9	99 569	506.09
June	187.8	67.2	87 326	464.98
September	224.4	83.7	106 678	475.49
December	225.4	85.5	116 010	514.74
<b>2000</b>				
March	205.2	78.0	110 252	537.26

(a) For more information refer to paragraph 12 of the Explanatory Notes.

## WHOLE MILK INTAKE, By Factories(a): All Series

	<i>New South Wales</i>	<i>Victoria</i>	<i>Queensland</i>	<i>South Australia</i>	<i>Western Australia</i>	<i>Tasmania</i>	<i>Australia</i>
<i>Quarter</i>	<i>ML</i>	<i>ML</i>	<i>ML</i>	<i>ML</i>	<i>ML</i>	<i>ML</i>	<i>ML</i>
ORIGINAL							
<b>1998</b>							
September	324	1 430	221	155	109	93	2 332
December	359	2 382	222	195	103	240	3 501
<b>1999</b>							
March	310	1 605	198	150	95	171	2 529
June	293	997	185	143	97	99	1 814
September	346	1 606	219	171	109	100	2 551
December	388	2 535	232	213	105	258	3 731
SEASONALLY ADJUSTED							
<b>1998</b>							
September	321	1 555	215	150	100	147	2 488
December	318	1 543	206	160	101	143	2 471
<b>1999</b>							
March	320	1 641	202	165	102	153	2 583
June	328	1 783	203	170	100	170	2 754
September	343	1 745	213	166	100	158	2 725
December	344	1 643	215	174	103	154	2 633
TREND ESTIMATES							
<b>1998</b>							
September	316	1 526	210	154	102	138	2 446
December	319	1 581	207	159	101	148	2 515
<b>1999</b>							
March	322	1 663	204	164	101	157	2 611
June	330	1 722	205	168	101	161	2 687
September	339	1 730	210	170	101	161	2 711
December	345	1 697	215	172	102	157	2 688

(a) For more information refer to paragraph 13 of the Explanatory Notes.

Source: Original series milk data from Australian Dairy Corporation.

## MARKET MILK SALES, By Factories(a): All Series

	<i>New South Wales</i>	<i>Victoria</i>	<i>Queensland</i>	<i>South Australia</i>	<i>Western Australia</i>	<i>Tasmania</i>	<i>Australia</i>
<i>Quarter</i>	<i>ML</i>	<i>ML</i>	<i>ML</i>	<i>ML</i>	<i>ML</i>	<i>ML</i>	<i>ML</i>
ORIGINAL							
<b>1998</b>							
September	149	115	97	47	48	12	468
December	145	109	96	47	48	12	457
<b>1999</b>							
March	140	105	94	45	47	12	444
June	144	113	95	46	48	12	458
September	144	110	98	47	47	12	459
December	140	111	96	48	47	12	454
SEASONALLY ADJUSTED							
<b>1998</b>							
September	147	113	95	47	48	12	463
December	145	109	96	46	48	12	457
<b>1999</b>							
March	144	109	96	46	47	12	454
June	143	110	95	46	48	12	454
September	141	109	96	47	48	12	453
December	141	111	97	47	47	12	454
TREND ESTIMATES							
<b>1998</b>							
September	145	111	96	47	48	12	459
December	145	110	96	46	48	12	458
<b>1999</b>							
March	144	109	96	46	48	12	455
June	143	109	96	46	48	12	454
September	142	110	96	47	48	12	453
December	141	110	96	47	47	12	454

(a) For more information refer to paragraph 13 of the Explanatory Notes.

Source: Original series milk data from Australian Dairy Corporation.

## BROKERS AND DEALERS RECEIVALS OF TAXABLE WOOL(a): All Series

Quarter	New South Wales	Victoria	Queensland	South Australia	Western Australia	Tasmania	Australia	% of total received by brokers
	tonnes	tonnes	tonnes	tonnes	tonnes	tonnes	tonnes	tonnes
ORIGINAL								
<b>1998</b>								
December	53 349	57 028	11 526	26 251	41 572	5 697	<b>195 422</b>	83.0
<b>1999</b>								
March	41 405	30 486	10 564	19 198	40 321	2 955	<b>144 929</b>	83.9
June	35 964	26 647	15 388	16 138	23 838	3 400	<b>121 375</b>	78.8
September	54 347	40 052	16 198	26 667	37 784	5 228	<b>180 276</b>	83.4
December	57 797	54 307	7 254	25 291	45 341	6 710	<b>196 699</b>	81.4
<b>2000</b>								
March	38 343	29 406	9 527	19 022	35 588	3 101	<b>134 985</b>	81.8
SEASONALLY ADJUSTED								
<b>1998</b>								
December	45 269	35 724	16 298	20 525	37 804	3 815	<b>159 435</b>	..
<b>1999</b>								
March	48 402	39 658	12 082	23 503	37 558	4 170	<b>165 371</b>	..
June	47 430	46 720	13 950	23 583	37 234	4 433	<b>173 349</b>	..
September	44 940	37 613	12 343	22 121	31 897	5 088	<b>154 001</b>	..
December	48 974	34 132	10 175	19 523	41 103	4 616	<b>158 523</b>	..
<b>2000</b>								
March	44 890	38 150	10 916	23 381	33 231	3 998	<b>154 566</b>	..
TREND ESTIMATES								
<b>1998</b>								
December	45 583	38 277	13 543	22 212	36 588	3 928	<b>160 129</b>	..
<b>1999</b>								
March	46 742	40 839	13 994	22 860	36 810	4 054	<b>165 300</b>	..
June	47 409	41 583	13 199	22 771	36 490	4 397	<b>165 848</b>	..
September	46 951	39 532	12 010	22 029	36 051	4 620	<b>161 192</b>	..
December	46 558	36 820	11 169	21 440	36 090	4 561	<b>156 635</b>	..
<b>2000</b>								
March	46 285	35 498	10 333	21 693	35 887	4 389	<b>154 087</b>	..

(a) For more information refer to paragraphs 14 and 15 of the Explanatory Notes.

## LIVESTOCK PRODUCTS: Original

Financial year	New South Wales	Victoria	Queensland	South Australia	Western Australia	Tasmania	Australia
WHOLE MILK INTAKE BY FACTORIES (ML)(a)							
<b>1996-1997</b>	1 192	5 622	797	535	349	529	<b>9 024</b>
<b>1997-1998</b>	1 242	5 866	822	580	386	543	<b>9 438</b>
<b>1998-1999</b>	1 286	6 414	827	643	403	603	<b>10 175</b>
MARKET MILK SALES BY FACTORIES (ML)(a)							
<b>1996-1997</b>	576	452	376	173	193	50	<b>1 820</b>
<b>1997-1998</b>	591	442	379	182	190	49	<b>1 833</b>
<b>1998-1999</b>	578	442	382	185	191	48	<b>1 827</b>
BROKERS AND DEALERS RECEIVALS OF TAXABLE WOOL (Tonnes)(a)							
<b>1996-1997</b>	195 481	175 209	45 850	89 579	160 022	18 876	<b>685 018</b>
<b>1997-1998</b>	183 156	152 600	45 906	87 910	153 882	17 265	<b>640 717</b>
<b>1998-1999</b>	181 712	155 113	51 873	89 450	145 515	16 232	<b>639 894</b>

(a) For more information refer to paragraphs 13 to 15 of the Explanatory Notes.

Source: Original series milk data from Australian Dairy Corporation.

# WHAT IF...? REVISIONS TO TREND ESTIMATES

## EFFECT OF NEW SEASONALLY ADJUSTED ESTIMATES ON TREND ESTIMATES

Each time new seasonally adjusted estimates become available, trend estimates are revised (see paragraph 21 of the Explanatory Notes).

### TREND REVISIONS

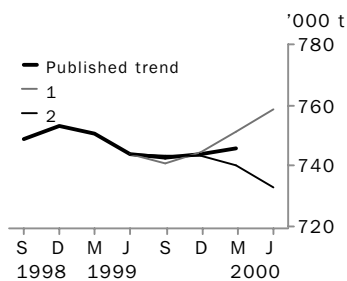
The graphs and tables which follow present the effect of two possible new seasonally adjusted estimates on the previous trend estimates:

**1** The June Quarter 2000 seasonally adjusted estimate is higher than the March Quarter 2000 estimate by the percentage shown.

**2** The June Quarter 2000 seasonally adjusted estimate is lower than the March Quarter 2000 estimate by the percentage shown.

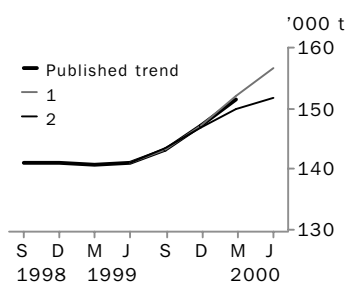
These percentages were chosen because they represent the average absolute quarterly percentage change for these series over the last ten years.

### RED MEAT PRODUCTION



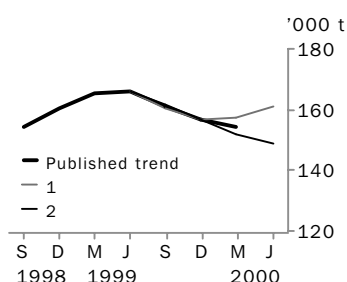
	TREND AS PUBLISHED		WHAT IF NEXT QUARTER'S SEASONALLY ADJUSTED ESTIMATE:			
	number	% change	<b>1</b> <i>rises by 3% on Mar Qtr 2000</i>		<b>2</b> <i>falls by 3% on Mar Qtr 2000</i>	
	number	% change	number	% change	number	% change
Mar Qtr 1999	750 374	-0.4	750 374	-0.4	750 374	-0.4
Jun Qtr 1999	743 780	-0.9	743 779	-0.9	743 779	-0.9
Sep Qtr 1999	742 374	-0.2	740 746	-0.4	743 116	-0.1
Dec Qtr 1999	743 853	0.2	744 382	0.5	743 470	0.0
Mar Qtr 2000	745 805	0.3	751 519	1.0	740 064	-0.5
Jun Qtr 2000	—	—	758 540	0.9	733 100	-0.9

### CHICKEN MEAT PRODUCTION



	TREND AS PUBLISHED		WHAT IF NEXT QUARTER'S SEASONALLY ADJUSTED ESTIMATE:			
	number	% change	<b>1</b> <i>rises by 4% on Mar Qtr 2000</i>		<b>2</b> <i>falls by 4% on Mar Qtr 2000</i>	
	number	% change	number	% change	number	% change
Mar Qtr 1999	140 698	-0.1	140 699	-0.1	140 699	-0.1
Jun Qtr 1999	141 053	0.3	141 054	0.3	141 054	0.3
Sep Qtr 1999	143 310	1.6	143 042	1.4	143 490	1.7
Dec Qtr 1999	147 009	2.6	147 074	2.8	146 919	2.4
Mar Qtr 2000	151 388	3.0	152 072	3.4	149 917	2.0
Jun Qtr 2000	—	—	156 761	3.1	151 649	1.2

### WOOL RECEIVALS



	TREND AS PUBLISHED		WHAT IF NEXT QUARTER'S SEASONALLY ADJUSTED ESTIMATE:			
	number	% change	<b>1</b> <i>rises by 9% on Mar Qtr 2000</i>		<b>2</b> <i>falls by 9% on Mar Qtr 2000</i>	
	number	% change	number	% change	number	% change
Mar Qtr 1999	165 300	3.2	165 299	3.2	165 299	3.2
Jun Qtr 1999	165 848	0.3	165 848	0.3	165 848	0.3
Sep Qtr 1999	161 192	-2.8	160 666	-3.1	161 810	-2.4
Dec Qtr 1999	156 635	-2.8	156 943	-2.3	156 527	-3.3
Mar Qtr 2000	154 087	-1.6	157 564	0.4	152 050	-2.9
Jun Qtr 2000	—	—	161 298	2.4	148 614	-2.3



# WHAT IF...? REVISIONS TO TREND ESTIMATES

## EFFECT OF NEW SEASONALLY ADJUSTED ESTIMATES ON TREND ESTIMATES

Readers should exercise care when interpreting trend estimates. The last three trend estimates, in particular, are likely to be revised when new seasonally adjusted estimates become available.

### TREND REVISIONS

The graph and tables which follow present the effect of two possible scenarios on the previous trend estimates:

**1** The March Quarter 2000 seasonally adjusted estimate is higher than the December Quarter 1999 estimate by:

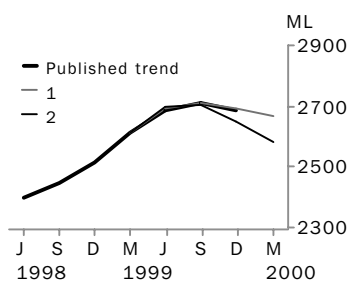
- +2% for whole milk intake by factories.

**2** The March Quarter 2000 seasonally adjusted estimate is lower than the December Quarter 1999 estimate by:

- 2% for whole milk intake by factories.

These percentages were chosen because they represent the average absolute quarterly percentage change for these series over the last ten years.

### WHOLE MILK INTAKE BY FACTORIES



	TREND AS PUBLISHED		WHAT IF NEXT QUARTER'S SEASONALLY ADJUSTED ESTIMATE:			
	number	% change	<b>1</b> <i>rises by 2% on Dec Qtr 1999</i>		<b>2</b> <i>falls by 2% on Dec Qtr 1999</i>	
	number	% change	number	% change	number	% change
Dec Qtr 1998	2 515	2.8	2 515	2.9	2 515	2.9
Mar Qtr 1999	2 611	3.8	2 611	3.8	2 611	3.8
Jun Qtr 1999	2 687	2.9	2 690	3.0	2 698	3.3
Sep Qtr 1999	2 711	0.9	2 710	0.7	2 707	0.3
Dec Qtr 1999	2 688	-0.8	2 690	-0.7	2 650	-2.1
Mar Qtr 2000	—	—	2 670	-0.7	2 580	-2.6

## EXPLANATORY NOTES

### INTRODUCTION

- 1** This publication contains information on livestock slaughterings, meat production, stocks of frozen meat, exports of live sheep and live cattle, exports of fresh, frozen and processed meat, and whole milk intake by factories, market milk sales by factories and receipts of taxable wool by wool brokers and dealers.
- 2** The figures shown in this publication have been revised where necessary and as a consequence may not agree with similar data shown in previous publications.
- 3** Where figures have been rounded, discrepancies may occur between sums of the component items and totals.
- 4** Unless indicated otherwise, Australian totals include data for all States and both Territories.

### LIVESTOCK SLAUGHTERINGS AND MEAT PRODUCTION

- 5** The statistics on slaughterings and meat production are based on a monthly collection from abattoirs and other major slaughtering establishments and include estimates of animals slaughtered on farms and by country butchers and other small slaughtering establishments.
- 6** Red meat is shown in carcass weight and excludes offal.
- 7** Care should be taken when using this information as the figures only relate to slaughterings for human consumption and do not include animals condemned, slaughtered for pet food or those killed for boiling down.
- 8** Poultry slaughterings and meat produced statistics have been compiled from returns supplied by commercial poultry slaughtering establishments and comprise boilers, fryers and roasters. Many small producers are excluded from the collection; however, the statistics represent a high level of coverage. Tasmanian data are excluded from the Australian total.
- 9** Chicken meat is shown in dressed weight of whole birds, pieces and giblets. Some slaughterings and meat production statistics for 'Ducks and Drakes' and 'Other Fowls and Turkeys' are available by contacting the ABS on Hobart 03 6222 5844 or by writing to GPO Box 66a, Hobart TAS 7001 (Attention: Agriculture Section).

### EXPORTS OF FRESH, FROZEN AND PROCESSED MEAT

- 10** Table 20 shows exports of fresh, frozen and processed meat, excluding offal. Factors can be applied to beef, veal, mutton and lamb bone-out figures to derive bone-in carcass weight which, when added to bone-in figures, shows total exports in carcass weight. The factor for beef and veal is 1.5 and for mutton and lamb, 2.0 (Source: Department of Agriculture, Fisheries and Forestry).
- 11** Beef also includes buffalo meat. Bacon and ham shown is the cured carcass weight of smoked or cooked bacon and ham. It also includes the stated net weight of packs of canned bacon and ham. Canned meat is shown as the canned weight and excludes canned bacon and ham.

### LIVE SHEEP AND CATTLE EXPORTS

- 12** Table 21 contains statistics of the number of live sheep and cattle exported, the gross weight, gross value and unit value. The unit value is obtained by dividing the gross value by the number of animals exported. Sheep and cattle exported for breeding are excluded.

### MILK

- 13** Tables 2, 22, 23 and 25 contain statistics collected by the Australian Dairy Corporation (ADC). Whole milk intake by factories includes the whole milk equivalent of farm cream intake. Market milk sales includes white, flavoured, high and low fat milk and uht milk.

## EXPLANATORY NOTES

### WOOL RECEIVALS

**14** The statistics in Tables 24 and 25 show the amount of taxable wool received by brokers and purchased by dealers from wool producers. It excludes wool received by brokers on which tax has already been paid by other dealers (private buyers) or brokers.

**15** The information shown is on the basis of the State in which wool has actually been received and does not necessarily reflect the production of wool in that State.

### SEASONAL ADJUSTMENT

**16** Seasonal adjustment is a means of removing the estimated effects of normal seasonal variation from the series so that the effects of other influences can be more clearly recognised.

**17** In the seasonal adjustment of the livestock estimates, account has been taken of both normal seasonal factors and 'trading-day' effects, where significant, (arising from the varying length of each quarter and the varying numbers of Sundays, Mondays, Tuesdays etc. in the quarter). Adjustments are also made for the effects of change in the date of Easter holidays, again, where significant. Seasonal adjustment does not remove from the series the effect of irregular influences (e.g. abnormal weather, industrial disputes).

**18** The State component series have been seasonally adjusted independently. Therefore, the adjusted components may not add to the Australian Group totals.

**19** As happens with all seasonally adjusted series, the seasonal factors are reviewed annually to take account of each additional year's data.

### TREND ESTIMATES

**20** A trend estimate is obtained by reducing the irregular component from the seasonally adjusted series. In this publication trend estimates are generally derived by applying a seven term Henderson moving average to the seasonally adjusted series. The seven term Henderson, (like all Henderson averages) is symmetric, but as the end of a time series is approached, asymmetric forms of the average are applied. Unlike the weights of the standard seven term Henderson moving average, the weights employed here have been tailored to suit the particular characteristics of individual series. While the asymmetric weights enable the trend to be calculated for recent quarters, it does result in revisions to the estimates for the most recent three quarters as additional observations become available. Revisions of trend estimates will also occur with revisions to the original data and re-estimation of seasonal factors.

**21** Sensitivity analysis indicates the potential magnitude and direction of revisions created to the last three estimates. It aims to show how a specified movement in the seasonally adjusted data in the next period will affect the trend path of the time series. By showing how sensitive the trend estimates are to the addition of new data, the analysis provides information which can be used in the assessment of the trend's stability.

**22** For further information, see *A Guide to Interpreting Time Series—Monitoring 'Trends', an Overview* (Cat. no. 1348.0) or contact the Assistant Director, Time Series Analysis on 02 6252 6345.

### RELATED PUBLICATIONS

**23** Current publications produced by the ABS are listed in the Catalogue of Publications and Products, Australia (Cat. no. 1101.0). The ABS also issues, on Tuesdays and Fridays, a Release Advice (Cat. no. 1105.0) which lists publications to be released in the next few days. The Catalogue and Release Advice are available from any ABS office.

## EXPLANATORY NOTES

---

SYMBOLS AND OTHER USAGES	billion	thousand million
	M	million
	ML	million litres
	n.a.	not available
	n.p.	not published
	p	preliminary
	t	tonnes
	..	not applicable







## FOR MORE INFORMATION...

- INTERNET* **www.abs.gov.au** the ABS web site is the best place to start for access to summary data from our latest publications, information about the ABS, advice about upcoming releases, our catalogue, and Australia Now—a statistical profile.
- LIBRARY* A range of ABS publications is available from public and tertiary libraries Australia-wide. Contact your nearest library to determine whether it has the ABS statistics you require, or visit our web site for a list of libraries.
- CPI INFOLINE* For current and historical Consumer Price Index data, call 1902 981 074 (call cost 75c per minute).
- DIAL-A-STATISTIC* For the latest figures for National Accounts, Balance of Payments, Labour Force, Average Weekly Earnings, Estimated Resident Population and the Consumer Price Index call 1900 986 400 (call cost 75c per minute).

### INFORMATION SERVICE

Data which have been published and can be provided within five minutes are free of charge. Our information consultants can also help you to access the full range of ABS information—ABS user pays services can be tailored to your needs, time frame and budget. Publications may be purchased. Specialists are on hand to help you with analytical or methodological advice.

- PHONE* **1300 135 070**
- EMAIL* **client.services@abs.gov.au**
- FAX* 1300 135 211
- POST* Client Services, ABS, GPO Box 796, Sydney 1041

## WHY NOT SUBSCRIBE?

ABS subscription services provide regular, convenient and prompt deliveries of ABS publications and products as they are released. Email delivery of monthly and quarterly publications is available.

- PHONE* 1300 366 323
- EMAIL* subscriptions@abs.gov.au
- FAX* 03 9615 7848
- POST* Subscription Services, ABS, GPO Box 2796Y, Melbourne 3001



2721500001004  
ISSN 0728-4047

RRP \$17.50

© Commonwealth of Australia 2000

Produced by the Australian Bureau of Statistics